



Grade 8

LN-8 Cell-Structure and Function

Date: 14/06/2023

Worksheet 1

I. Unscramble the following words:

S.no	Unscrambled words	Scrambled words
1.	LOICENCU	
2.	CTYOLASPM	
3.	LASPIDTS	
4.	BOIRMSOSE	
5.	SENEG	

II. Name of the following words:

1. It is a jelly-like structure present inside the cell that contains cell organelles.
2. It is an additional outer covering present in bacteria and plant cells.
3. This organelle contains the chromosomes.
4. It is a group of cells that perform similar function.
5. These cells are the smallest in the human body.
6. A small spherical densely-packed part present inside the nucleus.
7. It is the basic unit of inheritance.
8. These cells do not have nuclear membrane around the nucleus.
9. It is known as the powerhouse of the cell.
10. This type of plastids provides the green-pigment to the leaves

III. Draw and label the plant cell with its organelles.

Grade 8

LN-8 Cell-Structure and Function

Date: 14/06/2023

Worksheet 2

Which one of the following is not included in the nucleus?

- A) Endoplasmic reticulum B) DNA C) Gene D) Chromosome

Which one of the following statements is correct?

- A) Unicellular organisms do not reproduce.

- B) In Unicellular organism's tissues work in coordination to perform different functions.
- C) Unicellular organisms respire and reproduce.
- D) Unicellular organisms do not require food.
- E) None of these

Shefali accidentally touched a glass of hot water and immediately withdrew her hand back. She reacted on sensing the heat due to:

- A) Liver cells
- B) Skin surface
- C) Heart cells
- D) Nerve cells
- E) None of these

The table given below has certain terms and five spaces named a, b, c, d and e.

Cell	Feature/Part	Function
Bacteria plant cell C E	A Chloroplast Spindle shaped Selectively permeable	Movement B D Protect the cell from its surroundings

From the options given below choose the correct Combination of terms.

- A) A - pseudopodia, B - respiration, C - muscle cell, D - expansion, E - nucleus.
- B) A - flagella, B - photosynthesis, C - nerve cell, D - contraction, E - cell vacuole.
- C) A - cilia, B - reproduction, C - blood cell, D - contraction, E - nucleus.
- D) A - flagella, B - photosynthesis, C - muscle cell, D - contraction, E - cell membrane.

Which one of the following statements is correct?

(i) They have membrane bound organelles including a nucleus.

(ii) Bacteria are examples of prokaryotic cells.

(iii) Lysosomes are present in eukaryotic cells.

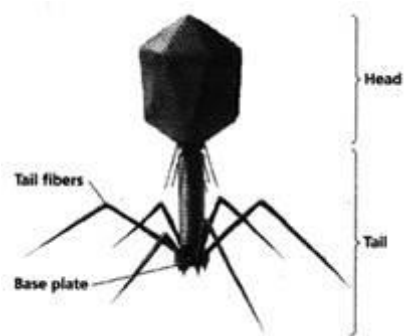
(iv) Fungi are prokaryotes.

A) (i) and (ii)

B) (ii), (iii) and (iv)

C) (ii) and (iii)

D) (iii) and (iv)



Given figure is showing:

A) A bacterium

B) a virus

C) A protozoan

D) An algae

Match the following:

Column A		Column B	
(I)	Laminaria	[A]	Protozoa

(II)	Paramecium	[B]	Bacteria
(III)	Penicillium	[C]	Algae
(IV)	Streptococcus	[D]	Fungi

A) (I - D), (II - A), (III - B), (IV - C)

B) (I - C), (II - D), (III - A), (IV - B)

C) (I - D), (II - C), (III - B), (IV - A)

D) (I - E), (II - A), (III - D), (IV - B)

In eukaryotes genes are located in _____ of the cell.

A) Cytoplasm

B) Nucleus

C) Vacuoles

D) Chlorophyll

Which one of the following represents parts of an animal cell?

A) Chloroplast, Cell wall, Vacuole, Cell membrane, Nucleus.

B) Cell membrane, Nucleus, Vacuole, Mitochondria, Cell wall.

C) Cell membrane, Nucleus, Vacuole, Mitochondria, Ribosome.

D) Cell wall, Chloroplast, Mitochondria, Cell membrane, Nucleus.

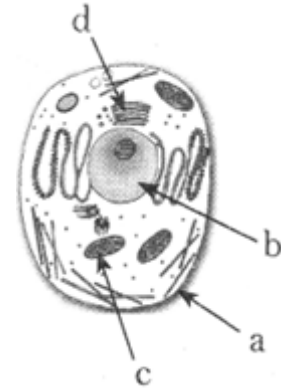
Which one of the following represents the correct level of organisation ranging from simplest to most complex?

A) Cells → Tissues → Organs → Organ systems → Organisms

B) Tissues → Organs → Cells → Organisms → Organ system

C) Cells → Tissues → Organ system → Organisms → Organs

D) Cells → Organs → Tissues → Organ systems → Organisms



Choose the correct option for labelling the given figure of an animal cell.

A) a - membrane, b - golgi body, c - mitochondria, d - nucleus..

B) a - cell membrane b - nucleus, c - mitochondria, d - golgi body

C) a - cell wall, b - nucleus, c - mitochondria, d - golgi body.

D) a - cell wall, b - golgi body; c - mitochondria, d - nucleus.

Complete the crossword with the help of clues given below:

Across

1. This is necessary for photosynthesis
3. Term for component present in the cytoplasm.
6. The living substance in the cell.
8. Units of inheritance present in the chromosome

Down

1. Green plastids
2. Formed by collection of tissues
4. It separates the content of the cell from the surrounding medium.
5. Empty structure in the cytoplasm
7. A group of cells.

